

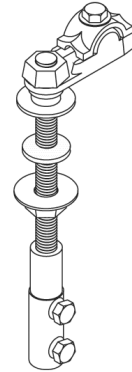
Right Angle Thru-Roof Connector

Consists of a mechanical conductor connector, a lead seal flashing washer, 1/2" X 8" threaded stem and bronze bottom connector. Fits up to 6" roof thickness.

3601 Cast bronze thru-roof connector **WT 1.43 lbs (0.65 kg)**

3601A Cast aluminum thru-roof connector **WT 1.0 lbs (0.45 kg)**

Note: Please call ALLTEC Corporation for custom stem sizes.

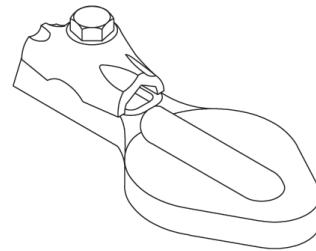
**Feed-Thru-Roof Connector**

For making roof penetrations through soffits on residential applications

Uses both finger and mechanical cable clamps.

3611 Cast bronze thru-roof connector **WT 11.0 oz (311.8 g)**

3611A Cast aluminum thru-roof connector **WT 4.0 oz (113.4 g)**

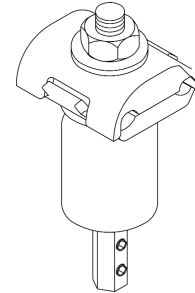
**PVC Thru-Roof Conduit Connector**

The PVC thru-roof conduit connector consist of a cast bronze mechanical conductor connector, a polymer seal washer, a PVC end cap for 1" schedule 40 PVC, and mechanical straight conductor connector with a 3" threaded stem.

3621 Thru-roof connector for copper cable connection **WT 15.0 oz (425.2 kg)**

3621A Thru-roof connector for aluminum cable connection **WT 9.0 oz (255.1 g)**

3621B For aluminum cable to copper down conductor **WT 12.0 oz (340.2 g)**

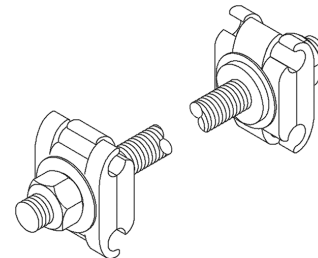
**Thru-Wall Connector**

The Thru-Wall Conductor has an 18" threaded stem and two adjustable, mechanical conductor connector.

3651 Copper/Bronze thru-wall connector with 1/2" diameter stem
WT 1.50 lbs (0.68 kg)

3651A Aluminum thru-wall connector with 1/2" diameter stem
WT 10.0 oz (283.5 g)

3651B Bimetal thru-wall with 1/2" diameter stainless steel stem
WT 1.50 lbs (0.68 kg)



Note: Please call ALLTEC Corporation for custom stem sizes.