

910 TB

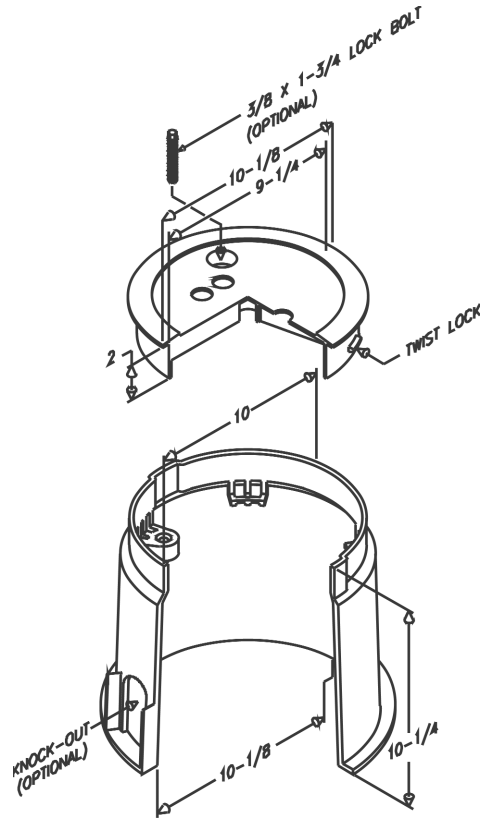
Poly Plastic Test Well

ASSEMBLY INCLUDES

Test Well Cover & Body
 Total Weight = 4.5 lbs (2.0 kg)
 (Available in Black or Green)

STATIC VERTICAL LOAD RATING

Body with HDPE Cover = 350 PSI



PROPERTIES OF UNFOAMED RESIN	ASTM TEST METHOD	HDPE
Tensile Strength	D-638	3,100 - 5,500 PSI
Flexural Modulus	D-790	160,000 - 210,000 PSI
Notched Izod Impact Strength	D-256	5-15 ft. lbs./in
Deflection Temperature	D-648	165° to 180° F
Density	D-792	Minimum .955
Chemical Resistance	-----	Excellent
Water Absorption	-----	Nil

Note: For use in non-vehicular traffic installations ONLY.